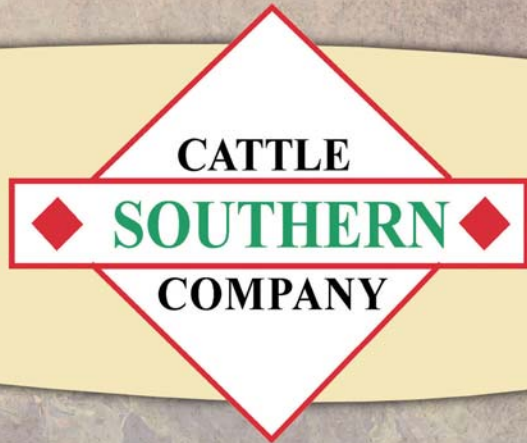


*Complete & Total
Fullblood Limousin Dispersal*

04.21.15

7 a.m. to 7 p.m. CST
www.rrmarketplace.com

Complete & Total Fullblood Limousin Dispersal



SALE DETAILS

Bidding Opens04.21.15 at 7:00 am (EST)
Bidding Closes.....04.21.15 at 7:00 pm (EST)

SALE MANAGEMENT

Randy Ratliff615.330.2735 or randy@rrmktg.com
R&R Technical Assistance
Jason Skidmore972.310.7627 or jason@rrmktg.com
Abby Lane919.618.8098 or abby@rrmktg.com
R&R International Sales
Peter Budler682.597.0380 or peter@rrmktg.com

CONSULTANTS

Skyler Davis770.307.7036
Bill Helton256.962.0256
Mark Smith515.229.5227

ADDITIONAL NOTES

- Sight Unseen Guarantee
- Buy with confidence
- All purchases are fully guaranteed
- All sale cattle are available for viewing at the farm. We welcome your visit and would love to show you our cattle. We take pride in what we have created and are anxious to show you what's for sale.
- All cattle sell under the standard guarantee of the North American Limousin Foundation
- We will work with all buyers to arrange trucking for your purchases at a minimal cost

Marianna, FL

Owner, John Downs

SCC Consultant: Frank Horn
601.573.6627
frankhorn6627@bellsouth.net

SCC International Sales: PJ Budler
682.597.0380
info@thecattlemarket.net

Bid at www.rrmarketplace.com

P.E. 3.06.15 to sale to Wulfs Amazing Bull T341A

We were fortunate to acquire this exceptional grand daughter of CPPD Georgia Peach, along with her dam LESF Naturally Peachy in the Lenape Limousin Dispersal. Sired by an extremely fertile and functional son of 1-Way Crown Royal, who is a many time champion in the breed. This \$10,000 valued female traces back to AUTO Cliff Hanger 194D who is still being used heavily by progressive breeders across the country in addition to being the "go to" sire in the Pinegar Limousin Fullblood program. Her design and pattern certainly drew many fans on sale day, she works well mated to a variety of Fullblood bulls, as well as Red Angus.



Morris



Limousin (100) Cow • Polled • Red • 04.08.10 • AHM 09X • NFF 1954423

Lot 1

BMS														
CE	BW	WW	YW	MK	TM	CEM	SC	ST	DOC	YG	CW	REA	MB	MTI
4	5.3	53	74	30	-	4	-	-	9	-0.26	22	0.48	-0.18	41

1-WAY CROWN ROYAL
 LENAPE SPOTLIGHT
 LENAPE DAYLIGHT
Lenape Polled Plum
 AUTO CLIFF HANGER 194D
 LESF NATURALLY PEACHY
 CPPD GEORGIA PEACH 30G

KOYLE SUPER TEST
 1-WAY POLLED LADY JAN
 LENAPE CATERA
 LENAPE SUNRISE
 TEXS RANGER PRIMO
 YKCC HEART THROB 141W
 GOLDENVIEWKRUGERRAND 250K
 STBR MISS HOPPER 462C

Bid at www.rrmarketplace.com



Morris

Due 11.14.15 to Wulfs Amazing Bull T341A

Lenape Anna Belle has a flawless pedigree that is packed full of impressive features and highlights. In our opinion you have generations of champions stacked up on the bottom side of her pedigree and then the well respected, late Harrison Mosher of Lenape Limousin meticulously mated Pam with an exceptional outcross option. STZZ Polled Guthrie 826H is extremely fertile, moderate framed and known for his low birth weight. Anna Belle is a past champion at the PA Farm Show, which is further proof that her design and structural integrity are nearly ideal.



Limousin (100) Cow • Polled • Red • 03.19.19 • AHM 03W • NFF 1936991

Lot 2

EPDS														
CE	BW	WW	YW	MK	TM	CEM	SC	ST	DOC	YG	CW	REA	MB	FT
5	1.7	61	81	26	57	5	-0.30	22	7	-0.27	20	0.38	-0.16	-0.07
70	45	45	60	35	35	55	85	20	85	20	60	60	75	4
Breed Ranking														

STZZ POLLED YUKON 50E
STZZ POLLED GUTHRIE 826H
THUNDERATION
Lenape Anna Belle 03W

AUTO CLIFF HANGER 194D
AUTO PAM 285P
TCR CHARM 305C

YKCC TOP LINE 180X
MASH WHISPER
ORION
HI CTRY POLL WONDER DJMW5

TEXS RANGER PRIMO
YKCC HEART THROB 141W
HARVEST OLYMPUS
SCF PROMIS RING 830X

Bid at www.rrmarketplace.com



Due 11.17.15 to Wulfs Amazing Bull T341A

Lenape Hannah is a direct daughter of breed matriarch AUTO Pam 285P, who's impact will be seen for many generations to come within the Fullblood Limousin population. Hannah is amongst one of the many great Pam daughters in existence, however her outcross sire makes her a ultra-dynamic breeding piece. This polled female is certainly a viable option for those looking to make the next step forward with their breeding program.



Limousin (100) Cow • Polled • Red • 02.19.08 • AHM 02U • NFF 1910252

Lot 3

EBP's														
CE	BW	WW	YW	MK	TM	CEM	SC	ST	DOC	YG	CW	REA	MB	FT
0	2.2	54	73	27	54	8	-0.50	18	16	-0.29	16	0.46	-0.29	-0.06
95	55	75	75	30	50	20	95	50	50	15	75	45	95	10

Breed Ranking

EBY EXTRA SPECIAL
CEDAR PATCH POLL G-FORCE
CEDAR PATCH POLL GLAMOR

Lenape Hannah

AUTO CLIFF HANGER 194D
AUTO PAM 285P
TCR CHARM 305C

BUTCH
ZAPALINE
MH HIGH COUNTRY WRANGLER
CEDAR PATCH GLOSSY

TEXS RANGER PRIMO
YKCC HEART THROB 141W
HARVEST OLYMPUS
SCF PROMISE RING 830X

Bid at www.rrmarketplace.com



Due 10.03.15 to Wulfs Amazing Bull T341A

It is hard for us to let go of our AUTO Cliff Hanger 194D daughters, they are the finest of females in every way, bred in the historically significant Dick Avery program. Modern in their kind, solid milkers and consistent producers. Tracing back to Uranus, Goldenview Kruggerand and Harvest Olympus further adds to The Woman's value, she simply combines the best of the breed shaping and the breed changing genetics. Her 32 MA puts her in the top 10 of the breed maternally.

Morris



Limousin (100) Cow • Horned • Red • 10.10.07 • AHM 098T • NFF 1898543

Lot 4

EPDs														
CE	BW	WW	YW	MK	TM	CEM	SC	ST	DOC	YG	CW	REA	MB	FT
4	3.2	65	89	32	64	2	-0.40	21	3	-0.27	26	0.55	-0.18	-0.06
80	75	35	45	10	10	85	90	25	95	20	40	30	80	10
Breed Ranking														

TEXS RANGER PRIMO
 AUTO CLIFF HANGER 194D
 YKCC HEART THROB 141W
Lenae The Woman

THE MAN

SOGF SPECIAL K 247B
 MISS OLYMPUS

TEXS RANGER EL PRESIDENTE
 TEXS STAR LUV
 URANUS
 MS TGJS PETTICOAT 129 R

GOLDENVIEWKRUGGERAND 250K
 SOGF LONESOME DOVE 832W
 HARVEST OLYMPUS
 VIOLET

Bid at www.rrmarketplace.com

Due 11.07.15 to Wulfs Amazing Bull T341A

ENGD Twilight 400T was a highlight of the Lenape Dispersal. Her exceptional progeny that were featured, made her a focus of the offering. This polled fullblood was produced in the famed Englewood Farms of the mid-2000's, that was lean muscle focused at the time. She ranks in the top 10% of the Limousin Breed for FT epd. She sells due 11.7.15 to Wulfs Amazing Bull T341A, the past lot 1 \$33,000 highlight from WULFS Cattle, and one of the few elite Bulls featured in the ABS Global bull line-up. He is direct son of the Trails End Limousin donor, Wulfs Ultra Diamond 8571U, who also produced the Lot 2, 3 and 4 bulls of the same sale.



Morris



Limousin (100) Cow • Polled • Red • 03.18.07 • ENGD 400T • NFF 1893641

Lot 5

EPDs														
CE	BW	WW	YW	MK	TM	CEM	SC	ST	DOC	YG	CW	REA	MB	FT
3	5.4	59	82	25	55	2	-0.80	-	0	-0.21	26	0.42	-0.14	-0.06
90	95	55	60	45	45	85	95	-	95	40	40	55	70	10
Breed Ranking														

EAFF MR MEDALIST 252J
RPER POLLED MAGELLAN 189M
OAKM LADY LOUANNE 886B
ENGD Twilight 400T

OAKM LORD JUPITER 26D
OAKM LADY DELITE 1057L
OAKM LADY DANIELLE 577F

MINE GOLD MEDAL 436G
OAKF SIENNA 9814X
TEXS RANGER TED
TEXS STAR LILLIAN

URANUS
AQUITANIA
ORION
OAKM 778A

Bid at www.rrmarketplace.com

Due 1107.15 to Wulfs Amazing Bull T341A

We would encourage you to study this female from the ground up, like all good livestock she is perfectly constructed with a solid and rugged foundation, yet she still is extremely feminine through her front end. Certainly a front pasture female here at Southern Cattle Company. Her data profile is equally impressive, posting 34 MA thus earning her a status amongst the top 10% of the breed for milk. Another direct daughter of the past All-American Futurity winning female, AUTO Pam 285P, a breed changing females that we felt we couldn't ever have enough females out of.



Morris



Limousin (100) Cow • Horned • Red • 11.01.06 • AHM 098S • NFF 1856599

Lot 6

EPDs														
CE	BW	WW	YW	MK	TM	CEM	SC	ST	DOC	YG	CW	REA	MB	FT
3	2.7	67	90	34	67	6	0.10	17	8	-0.30	27	0.64	-0.13	-0.06
90	65	25	45	5	5	40	45	60	85	15	40	20	65	10

Breed Ranking

STBR KIPPER 639K
COJR HIGH TIDE 236M
STBR LILITH 208G

Lenape Tidal Wave

AUTO CLIFF HANGER 194D
AUTO PAM 285P
TCR CHARM 305C

SOGF TOTAL 600F
STBR LADY SHOWTIME 341H
URANUS
STBR WENDY'S PUNCHETTE

TEXS RANGER PRIMO
YKCC HEART THROB 141W
HARVEST OLYMPUS
SCF PROMISE RING 830X

Bid at www.rrmarketplace.com



Morris

Due 11.02.15 to Wulfs Amazing Bull T341A

Possibly one of the deepest centered, soundest structured Fullblood Limousin females in existence is ENGD Soul Music. This polled, highlight leading donor is currently averaging a WW ratio of 108 and YW ratio of 106 on her progeny across the board. She is an exceptional breeding piece that will work beautifully to make quality Lim-Flex, purebred or Fullblood progeny. Her excellence is generations deep.



Limousin (100) Cow • Double Polled • Red • 09.23.06 • ENGD 349S • NFF 1889101

Lot 7

ENGD														
CE	BW	WW	YW	MK	TM	CEM	SC	ST	DOC	YG	CW	REA	MB	FT
0	6.5	64	88	32	64	3	-0.80	-	-3	-0.28	31	0.63	-0.20	-0.06
95	95	35	45	10	10	80	95	-	95	20	25	20	85	10
Breed Ranking														

EAFF MR MEDALIST 252J
RPER POLLED MAGELLAN 189M
OAKM LADY LOUANNE 886B

ENGD Soul Music 349S

SOGF BIG K 615F
OAKM LADY MUSIC 1192M
CRKT 254H

MINE GOLD MEDAL 436G
OAKF SIENNA 9814X
TEXS RANGER TED
TEXS STAR LILLIAN

GOLDENVIEWKRUGGERAND 250K
SOGF LONESOME DOVE 832W
HALLMARK 636F
OAKM LADY MURPHY 225C

Bid at www.rrmarketplace.com



Morris

Due 10.28.15 to Wulfs Amazing Bull T341S

This perfectly designed, straight lined female is exceptional on the profile and certain to draw attention. Scarlet is a consistent, maternal producer who is a direct daughter of the milk leader, Harvest Olympus. The Olympus daughters are known across the globe as being the very best producers that you can have. With her proven pedigree, her progeny are destined to be breed leaders and have a strong impact in many programs in the breed.



Limousin (100) Cow • Horned • Red • 05.03.06 • SKIP 43S • NFF 1841295

Lot 8

EPDs														
CE	BW	WW	YW	MK	TM	CEM	SC	ST	DOC	YG	CW	REA	MB	FT
-3	5.8	66	87	35	68	2	-0.10	19	4	-0.29	29	0.58	-0.30	-0.07
95	95	30	50	4	4	85	65	40	95	15	30	25	95	40

Breed Ranking

Scarlet

WINTERSHALL JUPITER
HARVEST OLYMPUS
LABORIEUSE

TEXAS RANGER PRIMO
LAURAS DALILA
STBR WENDYLOU'S ABBY 205A

FLEURI
FAIENCE
FLAMBEAU
FABIOLA (INITIAL ENTRY)

TEXAS RANER EL PRESIDENTE
TEXS STAR LUV
WRC PUNCH
BISHOPS SAHARA

Bid at www.rrmarketplace.com



Due 10.18.15 to Wulfs Amazing Bull T341A

Without exaggeration, Prinses is one of the finest daughters of the legendary Orion who is in production today. It has been a privilege to be able to work with this exceptional Dick Avery bred donor who is a direct daughter of his foundation donor, HALE Romance. Three generations of Romance progeny were highlighted and top sellers in the Avery dispersal sale, this is one of the last opportunities to buy a direct daughter of HALE Romance. With her intriguing pedigree and solid milk and growth numbers, Prinses would be an intriguing addition to many breeding programs.

Morris



Limousin (100) Cow • Horned • Red • 03.21.05 • SKIP 05R • NFF 1793811

Lot 9

EPDs														
CE	BW	WW	YW	MK	TM	CEM	SC	ST	DOC	YG	CW	REA	MB	FT
2	4.0	63	90	36	67	8	-0.20	15	-3	-0.30	28	0.54	-0.31	-0.08
95	90	40	45	3	5	20	75	75	95	15	35	35	95	2

Breed Ranking

ORION
HARVEST OLYMPUS
GOLDENVIEW LADY GVC 233K
Skip Prinses 05R

JTPK HOUSTON 426
HALE ROMANCE
RSKY ROMANCE 259B

WINTERSHALL JUPITER
LABORIEUSE
LAUREAT
FRONZES GUINCHEUSE

HARVEST OLYMPUS
PSLL DEB'S SPECIAL LADY
TEXS RANGER PRIMO
RSKY HONEYSUCKLE 140X

Bid at www.rrmarketplace.com



P.E. 3.06.15 to sale to Wulfs Amazing T341A

CPD Georgia Peach has produced many of the legendary cattle in the breed and was truly ahead of her time in terms of her style and eye-appeal, a past high seller in the Andrews Land & Cattle Dispersal. LESF Naturally Peachy is a direct daughter of Georgia Peach and is one deepest sided, easiest fleshing full-blood females in the country, yet she doesn't sacrifice the stoutness of foot and bone and dimension of muscle that we appreciate in these cattle. Paternal sister to past All-American Futurity Grand Champion, AUTO Pam.

Morris



Limousin (100) Cow • Horned • Red • 09.13.03 • LESF 167N • NFF 1755477

Lot 10

EPDs														
CE	BW	WW	YW	MK	TM	CEM	SC	ST	DOC	YG	CW	REA	MB	FT
2	5.3	59	81	30	59	3	-0.50	22	6	-0.26	25	0.56	-0.20	-0.06
95	95	55	60	15	25	80	95	20	90	25	45	30	85	10
Breed Ranking														

TEXS RANGER PRIMO
 AUTO CLIFF HANGER 194D
 YKCC HEART THROB 141W
LESF Naturally Peachy
 GOLDENVIEWKRUGERRAND 250K K & D BEAU FRANCO KDS 3F
 CPD GEORGIA PEACH 30G
 STBR MISS HOPPER 462C
 TEXS RANGER EL PRESIDENTE
 TEXS STAR LUV
 URANUS
 MS TGJS PETTICOAT 129 R
 IGUANE
 WRC PUNCH
 STBR WENDYLOU'S AVA 200A

Bid at www.rrmarketplace.com



SIRE ... PROCTERS CAVALIER (PZE)



DAM ... ANLC 10H

100% Fullblood Limousin

Lot 11

5 Embryos

100% Fullblood Limousin

Lot 12

5 Embryos

100% Fullblood Limousin

Lot 13

5 Embryos

100% Fullblood Limousin

Lot 14

5 Embryos

DAM EPD's														
CE	BW	WW	YW	MK	TM	CEM	SC	ST	DOC	YG	CW	REA	MB	MTI
3	5.1	72	92	35	-	-2	-0.3	12	-1	-0.24	31	0.36	-0.28	43

HALTCLIFFE VERMOUNT
 PROCTERS CAVALIER (PZE)
 PROCTERS PRUNELLA
 PENYRHEOL SAM
 RENONCLE
 STZZ POLLED YUKON 50E
 BURNING HEART 225W
 YKCC TOP LINE 180X
 MASH WHISPER
 TEXS RANGER PRIMO
 MCM REBECCA MEB 14U

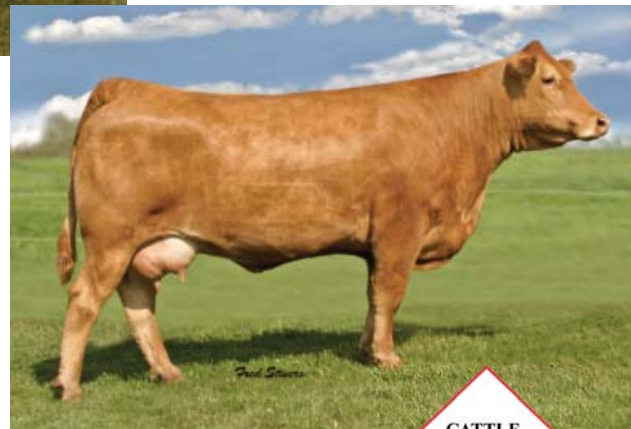
ANLC 10H is the leading fullblood donor for Southern Cattle Company. Due to her age she will not be offered in this sale but her influence can be purchased through this online sale. She is the big league polled Fullblood donor that made her mark in the Andrews Land & Cattle Company dispersal sale in 2003. She made her way to Lenape Limousin where she laid the foundation for the success of their program. This leading polled Fullblood donor continues to produce excellence for Southern Cattle Company and they have decided to showcase her embryos in this sale. They are sired by the United Kingdom sire Procters Cavalier. Buy with confidence as these future calves will be a highlight with any program that makes the purchase.

Bid at www.rrmarketplace.com



SIRE ... PROCTERS CAVALIER (PZE)

ANLC 10H is the epitome of foundation donor. For over a decade her progeny have graced the pastures of such leading programs as Englewood Farms, Andrews Land and Cattle, ACH Holdings and were the Lot 2 feature for the Mosher family in the historic Lenape Dispersal. Her maternally driven EPD profile ranks her in the top 4% of the breed for Milk and the top 2% for TM. In an effort to blend the best of each continent, we invested in mating her to Irish power bull, Procters Cavalier, the 100,000gns valued son of Hatcliffe Vermont.



DAM ... ANLC 10H

100% Fullblood Limousin

Lot 15

EPDs														
CE	BW	WW	YW	MK	TM	CEM	SC	ST	DOC	YG	CW	REA	MB	FT
2	4.0	63	90	36	67	8	-0.20	15	-3	-0.30	28	0.54	-0.31	-0.08
95	90	40	45	3	5	20	75	75	95	15	35	35	95	2

Breed Ranking

HATCLIFFE VERMONT
PROCTERS CAVALIER (PZE)
PROCTORS PRUNELLA

7 Embryos (Guaranteed Heifers)

ANCL 10H

STZZ POLLED YUKON 50E

BURNING HEART 225W

FRONZES GUINCHEUSE

YKCC TOP LINE 180X

CMCC 501T

TEXS RANGER PRIMO

MCM REBECCA MEB 14U



Bid at www.rrmarketplace.com



SIRE ... WILODGE TONKA



DAM ... ANLC 10H

100% Fullblood Limousin

Lot 16

5 Embryos

100% Fullblood Limousin

Lot 17

5 Embryos

100% Fullblood Limousin

Lot 18

5 Embryos

100% Fullblood Limousin

Lot 19

5 Embryos

Dam EPD's														
CE	BW	WW	YW	MK	TM	CEM	SC	ST	DOC	YG	CW	REA	MB	MTI
3	5.1	72	92	35	-	-2	-0.3	12	-1	-0.24	31	0.36	-0.28	43

OXYGENE/FR1298171453 JANVIER
 WILODGE TONKA ISOCELE
 WILODGE MECLAIRE BRONTEMOOR ILKLEY
 NEWSHAM ECLAIRE
 STZZ POLLED YUKON 50E YKCC TOP LINE 180X
 MASH WHISPER
 BURNING HEART 225W TEXS RANGER PRIMO
 MCM REBECCA MEB 14U

Imported from Ireland, we chose to utilize this exclusive semen of Wilodge Tonka on what many consider to be one of the very finest Fullblood females to walk on American soil, ANLC 10H. Tonka is noted as having a superior disposition and transmitting tremendous growth and muscling into his progeny. These valuable traits blended with 10H's maternal value, truly make this an opportunity for the ages.

Bid at www.rrmarketplace.com



This UK Mainland qualified sire is the famous Limousin bull that has created great interest around the world. This remarkable Limousin sire combines great maternal traits with tremendous terminal performance. He is one thick made beef bull that offers a complete out-cross pedigree to most established lines of cattle in the United States. Take advantage of this wonderful opportunity and consider semen in the Fullblood Limousin sire of excellence.

5 Units of Semen

Limousin (100) Bull • Red

Lot 20

Wilodge Tonka

JANVIER
OXYGENE/FR1298171453
ISOCELE

BRONTEMOOR ILKLEY
WILODGE MECLAIRE
NEWSHAM ECLAIRE



On the sale site there will be a link for the sires performance information.

Bid at www.rrmarketplace.com

Proctors Cavalier semen was imported from the United Kingdom by Southern Cattle Company. The Cavalier bull was purchased in Carlisle in 2008 for \$28,000 gns where he led the trade for intermediate bulls. He was purchased on the strength of his pedigree coupled with extreme muscling and width. He is sired by the noted 100,000 gns Haltcliffe Vermont and from a Daim and Marnull Isobella daughter Proctors Prunella. He was bought to compliment the shape and size of the females in the Emslies herd and has been used across their herd with progeny showing great muscularity and growth. Take advantage of this buying opportunity and consider this outcross fullblood sire.



5 Units of Semen

Limousin (100) Bull • Red

Lot 21

Proctors Cavalier (PZE)

PENYRHEOL SAM
HALTCLIFFE VERMOUNT
RENOCULE

RONICK HAWK
HEROS

PROCTORS PRUNELLA



On the sale site there will be a link for the sires performance information.

Bid at www.rrmarketplace.com

Headlining the Southern Cattle Company herd sire battery is Wulfs Amazing Bull T341A. He is the \$40,000 valued sire that was a top purchase in a past Wulf Limousin sale. He is a red and homozygous polled son of HUNT Mr. Jock 44J and from a daughter of JLWN Dire Straights 4109P back to a daughter of COLE Wulf Hunt. This young purebred Limousin bull has the genetic make up and performance bred into him to create a positive influence for the new buyer. Buy with confidence that all the Fullblood females in this online sale will create red polled purebred progeny.

Adj. BW: 85 lbs.

Adj. WW: 685 lbs.

Adj. YW: 1,260 lbs.



5 Units of Semen

Limousin (100) Bull • Homo Polled • Red • Q3.06.13 • FI T341A • NPM20142673

Ref Sire

EPDs														
CE	BW	WW	YW	MK	TM	CEM	SC	ST	DOC	YG	CW	REA	MB	MTI
4	2.7	75	112	30	67	11	0.80	24	34	-0.20	40	0.66	-0.02	-0.04

Wulfs Amazing Bull T341A

LVLS POLLED JUSTICE 0601E
HUNT MR JOCK 44J
HUNT MISS GIGGLE 129G

JLWM DIRE STRAYTS 4109P
WULFS ULTRA DIAMOND 8571U
WULFS NICHOLA 3279N

LVLS POLLED BLACK JACK
FMLI STRETCH'S CHALLENGER
HUNT DEPEND 58D
CLHB MISS SUNDANCE 239B

ROMN JUSTICE
CORL TEMPEST 52G
COLE WULF HUNT
WULF'S CAKE WALK 3097C

